





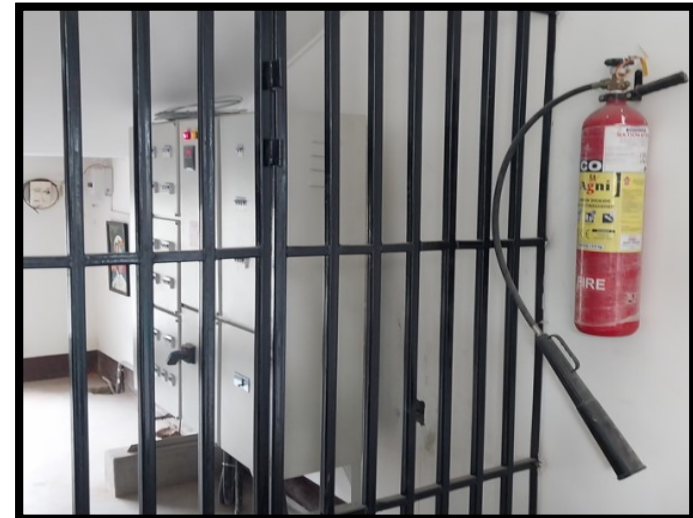








# POWER STATION









**PROF.(DR.) GAUTAM GOSWAMI**  
**MANAGING TRUSTEE**  
**SWADESHI EDUCATION TRUST**





**PRINCIPAL**  
**HIMANI TAHBILDAR BORA**  
**M. A. B. Ed.**





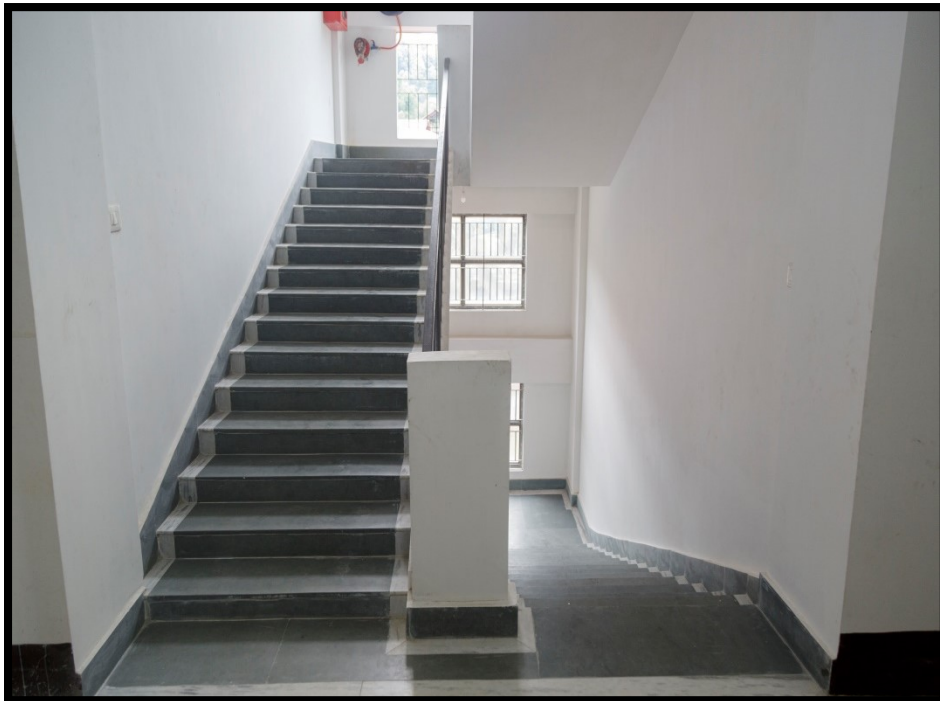




# SMART ROOM









# TEACHERS COMMON ROOM





## COMPOSITE SCIENCE LAB.







## WASHROOMS



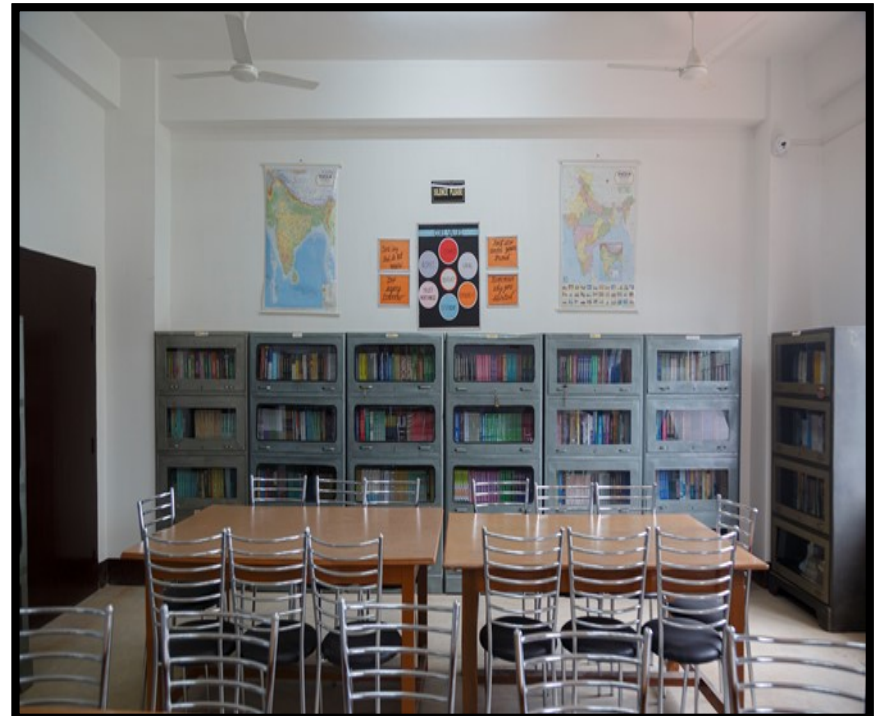


# CLASS ROOMS





# LIBRARY





# MATHEMATICS LAB.



# BIOLOGY LAB.





# CHEMISTRY LAB.

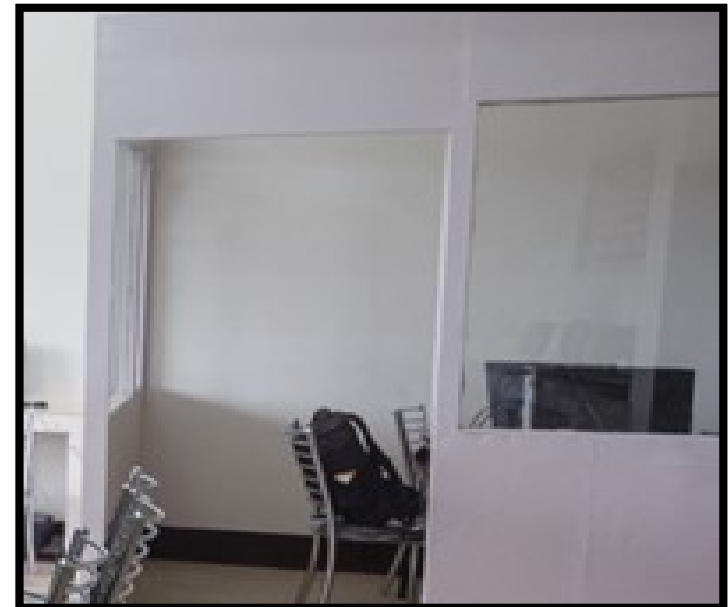
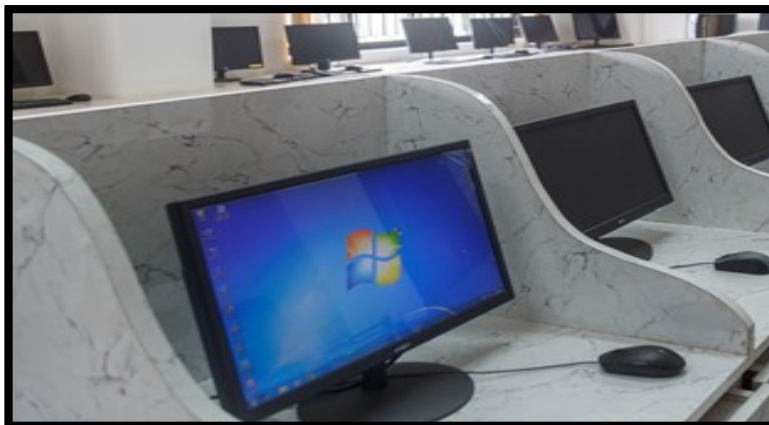


# EXTRA CURRICULAR ACTIVITY ROOM





# COMPUTER LAB.



# PHYSICS LAB





# INDOOR GAMES ROOM





**SICK ROOM.**











# Fire safety



# DRINKING WATER







**RAMP AT ENTRANCE**

# CORRIDOR

